

Minutes of Meeting		
Location: Park Place Lodge Fernie	Date: July 12, 2018	Time: 9:00 a.m. – 12:30 p.m.
Purpose: First 2018 Biannual Meeting	Version: Final	
Attendees: See attached	Issue date: November, 2018	

The meeting began shortly after 9:00am

Introductory Remarks

Simon provided a general welcome and gave information regarding exits and restrooms.

Vickie Thomas, new to the Steering Committee (SC), delivered a welcome from the Ktunaxa Nation.

Terry Melcer provided the safety share. She cautioned people when driving in flip flops. Flip flops can increase the likelihood of slipping and pressing the gas pedal by accident.

Simon introduced the SC members identifying those on the Executive. He then went around the room having everyone introduce himself or herself.

Communities of Interest Advisory Initiative (COIAI) Update – Simon Howse

- The Initiative is in its sixth year.
- The Elkford Senior Housing project originally supported by Kerri Wall and Sharon Strom from the SC is now its own entity, the Elkford Housing Society (EHS). Thanks was given to District of Elkford Councilor Denise Bertrand for driving it to a point where much progress is being made. Sharon is a member of the EHS and acts as Treasurer.
- Kim Bauer and Sharon continue to monitor childcare issues and opportunities. There was participation in dialogues around childcare with:
 - a consultant for Columbia Basin Trust (CBT) prior to the development of its Childcare Support Program launch
 - consultants preparing an extended hour childcare feasibility study for Trail
 - the Federal Shadow Minister for Families, Children and Social Development during a roundtable in Cranbrook
 - an SFU student using the Kootenay region’s mining sector as a case stud to identify the current barriers and challenges facing women who are seeking employment in the mining industry

Sharon is also on the Teck Coal Diversity Committee Childcare Working Group that arranged for the owners of Au Pair Solutions to present in the communities in April.

- The SC had many discussions around area housing needs and concerns. There will be a short presentation to follow.
- The SC also had many discussions around employment opportunities for area youth.
- At the quarterly meetings, updates are provided by committee members on such things as: future courses and plans for the College of the Rockies in Fernie; community safety concerns; municipal meetings/events and the Ktunaxa Nation. The SC looks forward to supporting Vickie to integrate public awareness and knowledge of regional Indigenous peoples and ongoing reconciliation.

Teck in Review (see attached presentation) – Norm Fraser

Norm Fraser, Leader Aboriginal Initiatives, provided a Teck update, which included:

- Long-term strategy
- Production, sales and coal guidance
- Sustainability commitments and recognition
- Reduction of carbon footprint
- Strengthening relationships with Indigenous peoples
- Inclusion, Diversity, Innovation focuses
- Steelmaking coal markets
- Water strategy

BB – Q – How is the US tariff war that is going on going to affect Teck?

NF – A – Remember the forward-looking statements and that nothing that is being said should be used as a basis for investments in Teck. As far as the tariff war goes, it is really hard to know. It may help customers in the US who have been faced with volatility and negativity.

Elkview Operations Dust Mitigation Measures (see attached) – Jessica Tremblay

Jessica Tremblay, Environmental Engineer with Teck provided an update on dust and mitigation measures at Elkview Operations (EVO) that included:

- Sources and types of dust
- Dust monitoring
- Dust management and challenges
- Community Feedback
- Continual improvement

Teck Feedback Report Review – Sharon Strom, Coordinator Sustainability

Sharon reviewed feedback received in Q1/Q2 2018

- The majority of complaints/feedback received by Teck in Q1 and Q2 were about dust visible above EVO, in the community, on outdoor surfaces, inside homes and above Elkview's Erickson Valley. The majority of the 36 related complaints immediately followed a specific blasting event at EVO on May 16.
- There were several complaints about the coal haul between Elkview and Coal Mountain Operations concerning product falling from the trucks. An announcement went out July 11 confirming that the highway haul will continue. More measures have been put in place to alleviate the concern of coal and dirt coming off the trucks.
- There was one concern from someone who found the gate at Coal Leach Road locked after it had been announced that the road was open. The concern was investigated and rectified.
- Four complaints came from Grave Lake cabin owners: two about garbage left behinds by partiers, one about an abandoned vehicle and one about the number of mosquitos this year.

Closure Task Group Update – Glen Hutton, Chair

Glen Hutton reported on the activities of the Closure Task Group (CTG) noting that they are considering what kind of legacy project may be a possibility.

BB – C – It would be nice to see something capturing the history of Sparwood and the Elk Valley.

GH – C – That has been a part of the discussion of the CTG

Housing Update – Simon Howse, Member CHBA BC

Simon provided an update on housing outlining the BC Energy Step Code (<https://energystepcode.ca/>). Currently, the District of Sparwood is embracing the Step program.

GG – Q – What would it cost on average for an existing home to become Step compliant?

SH – A – From Step 2 to 3 would be between \$4 – 5k. From Step 3 to 4 would be between \$20 – 25k.

DB – Q – Are there subsidies?

SH – A – BC Hydro and Fortis provide subsidies. The District of Sparwood will provide a rebate of 50% of permit fees up to \$500.

BC – Q – (in humour) Does Step stop dust from getting into homes.

SH – A – Actually it does because it creates an envelope.

Marijuana Legislation and Municipalities (see attached) – Terry Melcer, CAO District of Sparwood

Before beginning her presentation on Marijuana Legislation, Terry Melcer provided an update on selenium in Sparwood's well #3. In winter, the selenium levels averaged 11-12 micrograms up to a high of 12.5. Canadian guidelines consider the levels safe up to 50 micrograms. The Province lowered its guidelines to 10 micrograms. Tender has gone out for construction of the new well at a location that tested well, with excellent quality of water. The new well will cost in excess of \$4.5 million. Teck is covering the cost. The water will not be chlorinated or fluoridated.

Terry presented on the upcoming legalization of marijuana in Canada. Currently on medical marijuana is legal. With legalization, there will have to be controls and licensing required similar to those for alcohol. Sparwood surveyed the community for its feedback on how the use of marijuana should be controlled. With the results of the survey and discussions with Mayor and Council, a conservative approach to regulations is recommended. In BC, the way marijuana is regulated falls on the municipal governments to set and enforce.

DW – C – It appears how the legislation is approached varies between provinces. He will provide information on the discussion the Municipality of Crowsnest Pass (CNP) had on the regulations around marijuana. He will send them to Sharon to be include in the minutes.

(From CNP Councilor Dean Ward: CNP is bringing forth a bylaw on August 14 for its 3rd reading. The bylaw, if passed by Council, includes allowance for both retail stores in commercial areas and production facilities in Sentinel Industrial Park. The advice received from the municipal planner was that the Province of Alberta was not giving communities the option to ban these stores. They have given the municipalities the ability to put "setbacks" on how far these businesses must be from schools, parks, day cares etc. There is no doubt that some communities will put in place very large "setbacks" to limit the location of these stores.

The language in our proposed bylaw also required that applicants must apply for rezoning, which can only be approved by Council.)

Southern Rockies Grizzly Bear Project Update (see attached) – Clayton Lamb, PHD Candidate

<https://lamb-eco-research.ca/>

Clayton shared updated information on the grizzly bear study. He talked about the roadkill carcass dump near Olson crossing that is attracting grizzlies. Meetings are being held to discuss optional dump locations.

GH – Q – Is there a correlation between logging and grizzly bear populations?

CL – A – Originally logging seemed to be better for the populations but with the logging roads, the correlation became negative.

JT – Q – What about the effect of developments such as ski hills?

CL – A – Human disturbance always has a negative impact on grizzly bear populations.

Steering Committee 2018/2019 – Sharon Strom

Sharon Strom reviewed the matrix nomination process with the attendees. She confirmed that all current SC members would let their names stand. No additional nominations were put forward by email. None came from the floor. Because the matrix is set up to have representation from numerous communities of interest while providing close to equal representation from the area communities. A ballot was not necessary.

Closing Remarks

Simon suggested that, although the meetings usually end with a round table, since the meeting ran late it should be omitted this time. He thanked everyone for their attendance and participation and directed them to where lunch was laid out.

Meeting ended at 12:10 p.m. Attendees enjoyed a networking lunch.

Next Steering Committee meeting will be September 2018

Next Meeting of the Partners will December 2018

July 12, 2018 Advisory Partners Meeting Attendance

Name	Representing	Email
Beeching, Scott	District of Elkford	
Bellina, Bev	SD5	
Beranek, Dave	Guide Outfitter	
Bertrand, Denise	District of Elkford	
Cartwright, Shar	Municipality of the CNP	
Chattersson, Blair	SDFWA	
Crawford, Don	Sparwood/Safety	
Drain, Joanne	CNP/Seniors	
Fraser, Norm	Teck	
Galloway, Gordon	Motorized Rec	
Halko, Lois	Government	
Howse, Simon	Business/Housing	
Hutton, Glen	Closure Task Group	
Lamb, Clayton	S. Rockies Grizzly Bear Study	
MacNaughton, Bev	Sparwood Chamber	
Mac Con, Amy	Teck Human Resources	
Melcer, Terry	District of Sparwood	
Neal, Christine	Fernie/Interior Health	
Palmer, Anita	RDEKA/Education	
Robinson, Scott	Fernie/Community Safety	
Strom, Sharon	Teck Social Responsibility	
Talarico, Janice	Interior Health	
Thomas, Vickie	First Nations/Cranbrook	
Tremblay, Jessica	Teck Environment	
Wall, Kerri	Interior Health	
Ward, Dean	Municipality of CNP	
Wiess, Danielle	Teck Social Responsibility	
Wight, Nelson	District of Sparwood	

Unable to attend:

Name	Representing	Email
Anonson, Terry	Elkford/Metis Nation	
Bauer, Kim	Elkford/Social Services	
Craig, Andrew	Youth/Fernie	
Ferguson, Allie	Fernie/ENGOS	
Milligan, Nic	Teck Social Responsibility	
Wedderburn, Shelley	Michel Creek Road Residents	

TECK COAL ELK VALLEY COMMUNITIES OF INTEREST INITIATIVE						
STEERING COMMITTEE NOMINEES 2018/2019						
	Crowsnest Pass	Elkford	Sparwood	Fernie	RDEK Area A	Other
Local Government			Lois Halko			
ENGOS					Allie Ferguson	
Michel Creek/GN Rd Resident			Shelley Wedderburn			
Youth						
Seniors	Joanne Drain					
Business				Simon Howse		
Education					Anita Palmer	
Health Care				Christine Neal (Kerri Wall)		
Social Services		Kim Bauer				
Community Safety			(Don Crawford - support)	Scott Robinson		
Recreation Users		Gordon Galloway				
Aboriginal		Terry Anonson				Vickie Thomas
Teck Social Responsibility			Sharon Strom			
Teck Human Resources				Amy Mac Con		

**Teck
 Presentation**

Slides 1 & 2



The Right Commodities at the Right Time



Teck

Slides 3 & 4

Premier Operating Assets

Steelmaking Coal	Zinc	Copper	Energy
Premier Assets Elk Valley, Canada • High quality, steelmaking coal • 100% Fe • 100% feed of scrap iron • US\$ 20 of Adjacent TRECDA have the "strong expansion" • EBITDA Margin 21%	Premier Asset Mt Isa, Australia • Long life • Excellent quality of coal • Strong market position • Expanding potential of adjacent • EBITDA Margin 21%	Premier Assets (Australia, Canada, US) • Long life • 2,200,000 t of coal coal • Multiple opportunities for growth - US, Canada, Australia • EBITDA Margin 21%	Premier Asset Fort Hills, Canada • Long life • High quality, best reserves globally • Export the remaining • 200% • Expansion • Full of January 10, 2018 • 2018 ramp up

Teck

Balance Returning Cash to Shareholders and Capex With Prudent Balance Sheet Management

	Strategy	Capital Allocation
Steelmaking Coal	<ul style="list-style-type: none"> Maintain current production Optimize assets 	<ul style="list-style-type: none"> Significant free cash flow even at lower prices Cash available to fund growth projects Replicate Terrence's experience
Zinc	<ul style="list-style-type: none"> Maintain current production Optimize assets extend mine life Define Adjacent potential 	<ul style="list-style-type: none"> Strong near term commodity outlook, significant free cash flow Cash available to fund growth projects
Copper	<ul style="list-style-type: none"> Optimize current operations to lower costs 	<ul style="list-style-type: none"> Strong long term commodity fundamentals Attractive growth options - QEC, Nevada/US, San Nicolas, Chile/US
Energy	<ul style="list-style-type: none"> Moving from significant cash outflow to cash inflow 	<ul style="list-style-type: none"> 2018 ramping Longer term growth through deferring long life equipment
Portfolio Optimization	<ul style="list-style-type: none"> Sharex Cash, Nevada/US joint venture, Project Gibraltar 	

Teck

Slides 5 & 6

Consistent Long-Term Strategy

- Diversification
- Long life assets
- Low cost
- Appropriate scale
- Low risk jurisdictions



Teck

Attractive Portfolio of Long-Life Assets
 Low risk jurisdictions



Teck

Slides 7 & 8

Production Guidance

		2017 Results	2018 Guidance*	2019-2021 Guidance
Steelmaking Coal	Concentrate	28.1 Mt	28.7 Mt	30.1-31.3 Mt
	Capitank (W&C)	11.0	10.0	10.0-10.0
	Aspenite	14.0	14.0	14.0-14.0
	Canada (W&C)	21.1	20.0	20.0-20.0
Coke	Canada	1.1	1.0	1.0-1.0
	Others	0.0	0.0	0.0-0.0
Zinc	Concentrate	10.0 Mt	10.0 Mt	10.0-10.0
	Capitank (W&C)	1.0	1.0	1.0-1.0
	Aspenite	1.0	1.0	1.0-1.0
	Canada (W&C)	1.0	1.0	1.0-1.0
Zinc In Concentrate	Canada	1.0	1.0	1.0-1.0
	Others	0.0	0.0	0.0-0.0
Copper	Concentrate	0.0	0.0	0.0-0.0
	Others	0.0	0.0	0.0-0.0
Lead	Concentrate	0.0	0.0	0.0-0.0
	Others	0.0	0.0	0.0-0.0

Sales Guidance

	Q1 2018 Results*	Q2 2018 Guidance
Steelmaking Coal	8.1 Mt	8.7 Mt
Zinc		
Rail Dog - Zinc In Concentrate	111 kt	80 kt

Teck

Teck

Slides 9 & 10

Cost Guidance

	2017 Results	2018 Guidance*
Steelmaking Coal		
Site costs (S)	\$21	\$20-24
Capitank shipping (S)	\$19	\$19*
Transportation (S&C)	\$17	\$16-17
Total cash costs (S+C)	\$57	\$55-58
Copper		
C1 cash costs (C)	\$51-53	\$51-51.4
Capitank shipping (C)	\$50-50	\$50-50
Total cash costs (C)	\$101-103	\$101-101.4
Zinc		
C1 cash costs (C)	\$50-50	\$50-50
Capitank shipping (C)	\$50-50	\$50-50
Total cash costs (C)	\$100-100	\$100-100
Others		
Cash operating cost	N/A	CEX-4000

Sustainability Guides our Approach to Business

- Demonstrating a responsible, sustainable approach essential to continued growth and operational success
- Strong sustainability performance enabled by a strategy built around developing opportunities and managing risks
- Implementing a sustainability strategy with short-term goals out to 2020 and long-term goals stretching out to 2030



Teck

Teck

Slides 11 & 12

Sustainability Commitments and Recognition

Major Commitments

- International Council on Mining and Metals 10 Principles and Position Statements for Sustainable Development
- United Nations Global Compact
- Mining Association of Canada Towards Sustainable Mining program
- Council for Clean Capitalism
- Carbon Pricing Leadership Coalition

Recent Recognition



Reducing our Carbon Footprint Also Yields Savings

- Reduced greenhouse gas emissions by ~217,000 tonnes since 2011 by optimizing operations and investing in alternative energy generation
- Goal to cut emissions from existing operations by 450,000 tonnes by 2030
- Majority of operations covered by carbon pricing



Teck

Teck

Slides 13 & 14

Strengthening Relationships with Indigenous Peoples

- Agreements in place at all mining operations within or adjacent to Indigenous Peoples' territories.
- ~\$32 million in procurement spend with Indigenous Peoples at our steelmaking coal operations and Highland Valley Copper Operations in 2017
- Advancing a Reconciliation Action Plan in 2018, the first of its kind created by a Canadian resources company



Teck

Inclusion and Diversity is Good for Business

- Women comprised 29% of total hires in 2017
- 760 leaders across Teck participated in Gender Intelligence Training Workshops
- Teck-wide Gender Pay Equity Review conducted showing no systemic gender pay issue



Teck

Slides 15 & 16

Our Innovation Focus



Productivity

- Equipment utilization
- On-site efficiency
- Digitally enhanced operator performance
- Predictive maintenance
- Improving grade and processing



Safety

- Fatigue monitoring systems
- Culture awareness monitor
- Remote & autonomous mobile equipment
- Wearable OMS systems



Sustainability

- Etc. using to reduce energy use and manage related management technologies
- Our management
- Digital community engagement



Growth

- Exploration tech
- Inspectorless ore sampling
- Chemistry methods through new product work
- Partnering with game-changing innovators

Digital Foundation

Teck

Steelmaking Coal Business Unit & Markets

Teck

Slides 17 & 18

Steelmaking Coal Price Exceeding Market Expectations

Coal Price Assessments¹



- Synchronized global growth supports steel demand and pricing
- Healthy steel industry stimulates global demand for seaborne coal
- Secular demand growth in India adds to demand for seaborne coal
- Chinese capacity reductions, environmental controls & mine safety checks to continue
 - Steel improves financial condition and reduces exports
 - Coal restricts domestic production and supports seaborne imports

Teck

Steelmaking Coal Facts

- Global Coal Production¹: 7.3 billion tonnes
- Steelmaking Coal Production²: ~1,160 million tonnes
- Export Steelmaking Coal³: ~320 million tonnes
- Seaborne Steelmaking Coal⁴: ~280 million tonnes

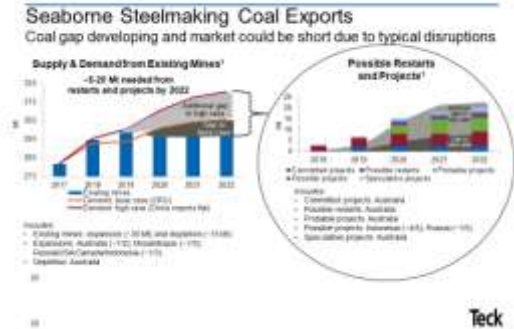
Our Market - Seaborne Hard Coking Coal⁵: ~190 Million Tonnes



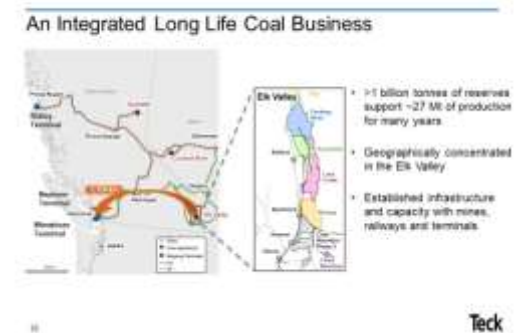
- ~0.7 tonnes of steelmaking coal is used to produce each tonne of steel⁶
- Up to 100 tonnes of steelmaking coal is required to produce the steel in the average wind turbine⁷

Teck

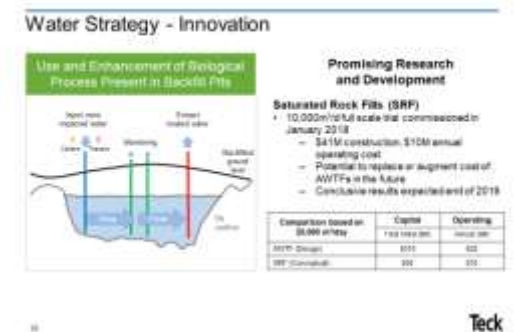
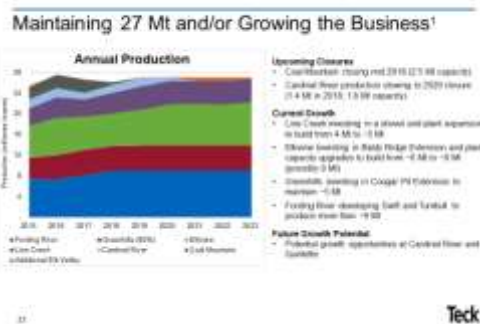
Slides 19 & 20



Slides 21 & 22



Slides 23 & 24



Slides 25 & 26

Water Strategy - Innovation

Use and Enhancement of Biological Process Present in Bacteria Pits

Promising Research and Development

Saturated Rock Fills (SRF)

- 10,000m³/hr full scale trial commenced in January 2018
- \$4.1M construction, \$10M annual operating cost
- Potential to replace or augment cost of ADTFs in the future
- Conclusive results expected end of 2018

Comparison based on \$1,000 wh/ky	Capital	Operating
ADTF (Design)	\$100	\$25
SRF (Concept)	\$20	\$10

~75 Mt of West Coast Port Capacity Planned

Our portion is >40 Mt, exceeds current production plans, including Quintette

Westshore Terminal

- Teck is largest customer at 19 Mt
- Large 800,000 sqm area
- Currently 33 Mt
- \$170M project for expansion to 50 Mt by 2019
- Contract signed March 2021

Naselle Coal Terminal

- Teck Corporate Joint Venture
- Recently expanded to 12 Mt
- Planned growth to ~18 Mt

Puget Terminal

- Current capacity 18 Mt
- Teck contracted at 5 Mt

West Coast Port Capacity

Category	Capacity (Mt)
Current Capacity	50
Planned Capacity	75

Teck

Teck

Slides 1 & 2

Teck Air Quality and Dust Management at EVO

Aug. 12, 2018

What Are Sources of Dust? Teck

Slides 3 & 4

Types of Dust - 3 Categories Teck

Human Hair: 50-70 microns in diameter

PM_{2.5}: Combustion particles, organic compounds, metals, etc. <2.5 microns in diameter. PM_{2.5} is one twentieth the diameter of a human hair.

PM₁₀: Dust, pollen, mold, etc. <10 microns in diameter. PM₁₀ are fifth the diameter of a human hair.

90 microns in diameter: Fine Beach Sand

Air Quality Monitoring Teck

Slides 5 & 6

Drivers- Legislation and Permit Requirements **Teck**

- Environmental Management Act Permit
- Regional Air Monitoring Program
- Environmental Assessment Certificate for Baldy Ridge Extension



Regional Monitoring **Teck**

- Fording River**
 - South Station/Waste Treatment
- Greenhills**
 - Elkford Station
 - Pumphouse
- Line Creek**
 - Plant Station
 - Mine Services Area
- Elkview**
 - Whispering Winds Trailer Park
 - Michel Creek Road Residents
 - Downtown Sparwood
 - Michel By-Products Plant
- Coal Mountain**
 - Andy Good Spoils
- Region**
 - Hosmer



Slides 7 & 8

Ambient Air Monitoring **Teck**
 BC Ambient Air Quality Objectives

Air quality objectives are used by the Ministry of Environment to

- Gauge current and historical air quality
- Guide decisions on environmental impact assessments and authorizations
- Inform regulatory development
- Develop strategies, such as air quality advisories

Parameter	BC Air Quality Objective
PM 2.5	25 ug/m ³ (1)
PM 10	50 ug/m ³ (2)



PM2.5 - Particulate Matter 2.5 micrometers or less in diameter
 PM10 - Particulate Matter 10 micrometers or less in diameter
 (1) 90% percentile of the daily average over 365 days compared to guideline
 (2) 95% average concentration compared to guideline

Downtown Sparwood Air Monitor vs. Hosmer **Teck**



PM2.5 at Downtown Sparwood for Monitoring

Slides 9 & 10

Monitoring Upgrades **Teck**

2018 Upgrades – Technology

- Upgrading Line Creeks monitoring equipment for continuous Total Suspended Particulate (TSP), PM10 and PM2.5
- Upgrading Elkview's monitoring equipment to include continuous TSP
- Potential to determine origin from continuous monitoring equipment
- Installation of the Sparwood Heights monitoring station in response to community feedback



Dust Management - Operations **Teck**

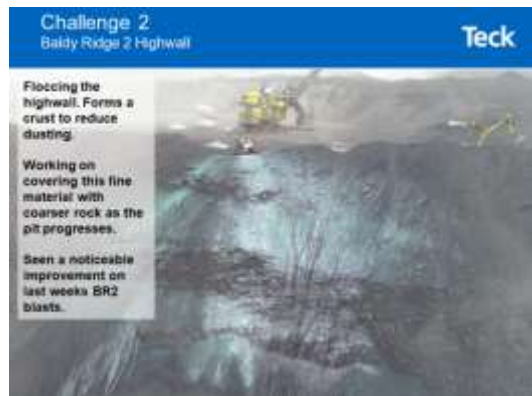
Slides 11 & 12



Slides 13 & 14



Slides 15 & 16



Slides 17 & 18



Slides 19 & 20



Slides 21 & 22



Slides 23 & 24

2018 Community Feedback **Teck**

- 35 complaints for the Elk Valley
- General complaints (6):
 - Visible above EVO
 - Dust in community; on outdoor surfaces and inside homes.
 - Visible above Erickson valley
- 2017 Community Feedback:
 - 28 total complaints for operations across the Elk Valley

2018 Dust & Air Quality Complaints for the Elk Valley

Category	Percentage
General	17%
EVO May 18 Staging Event	30%

Continual Improvement **Teck**

On top of its existing dust management program, EVO continually seeks opportunities for improvement.

- formed a Dust Management Committee with its Senior Staff
- currently leads a Regional Air Working Group encompassing all five mines in the Elk Valley.

Slides 1 & 2

Cannabis Legalization

July 12, 2018 Communities of Interest Advisory Initiative Partners Meeting, Fernie, BC
 Terry Melcer, CAO

SPARWOOD

What we will cover

- ★ Proposed Acts and amendments to other Acts
- ★ Local Government authority in regulation of sales, up to and including prohibition

SPARWOOD

Slides 3 & 4

Proposed Acts

- ★ **Cannabis Distribution Act**
 - establish a public wholesale distribution monopoly and run public retail stores
- ★ **Cannabis Control and Licensing Act**
 - protect children and youth, promote health and safety, keep the criminal element out of cannabis, and support economic development.
- ★ **Amendments to various acts**

SPARWOOD

Cannabis Distribution Act

- ★ **Liquor Distribution Branch**
 - 1st government-operated store by late summer
- ★ **Liquor Control and Licensing Branch**
- ★ Same rules as for liquor
- ★ Exceptions for rural communities

SPARWOOD

Slides 5 & 6

Cannabis Control and Licensing Act

- ★ Minimum 19 to purchase or sell
- ★ Maximum of 4 plants per household
- ★ Adults can possess up to 30 grams
- ★ Prohibited everywhere tobacco smoking and vaping is prohibited
- ★ Prohibited where children commonly gather
- ★ Cultivation banned in homes used as day-cares
- ★ Licensing regime is similar to liquor

SPARWOOD

Local Government Authority

- ★ How non-medical cannabis is sold within the municipality
- ★ How many retail stores will be permitted
- ★ Council support for issuance of licence
- ★ Retail store locations
- ★ Security requirements
- ★ Public consumption

SPARWOOD

Slides 7 & 8

Survey

The District of Sparwood has just completed a survey of residents to determine their preferred level of regulation of the sale of cannabis.

Those results will be going to Council at a Committee of the Whole meeting on July 30.

SPARWOOD

Cannabis Consumption

- ★ Cannabis smokers will have to abide by the same public smoking rules as tobacco users

SPARWOOD

Slides 9 & 10

Cannabis Cultivation

- ★ 4 plants permitted per household
- ★ Plants must not be visible from public spaces off the property

SPARWOOD

Retail Cannabis Stores

- ★ Council can ban retail sales
- ★ Regulate the number of stores and their locations
- ★ Council support is mandatory for provincial retail licence

SPARWOOD

Slide 11



Slides 1 & 2

@ClaytonLamb

South Rockies Grizzly Bear Project Update

Clayton T. Lamb
 PhD Candidate and Vanier Scholar
 University of Alberta

Research Team



Dr. Bruce McLellan



Dr. Garth Mowat



Dr. Stan Boutin



Dr. Michael Proctor



Dr. Scott Nielsen



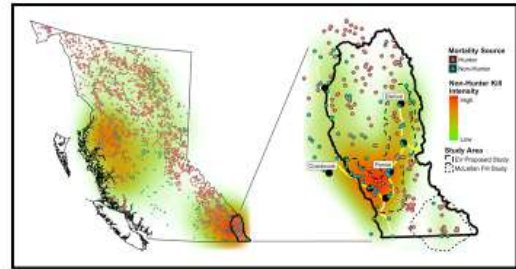
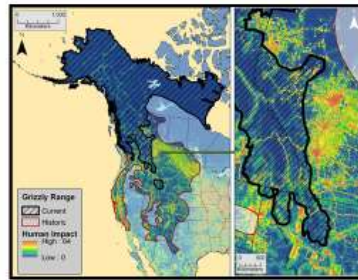
Laura Smit

Slides 3 & 4

Funders and Partners



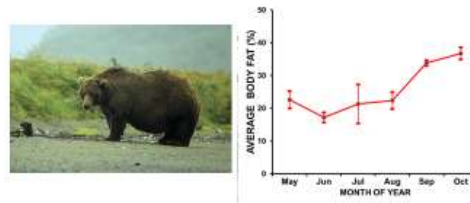
Slides 5 & 6



Slides 7 & 8

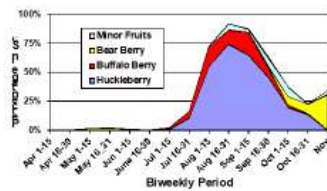


Flathead 1978-Current

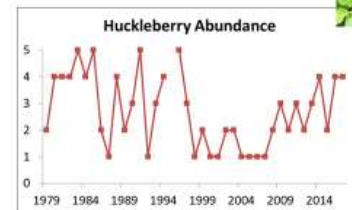


Slides 9 & 10

Flathead 1978-Current

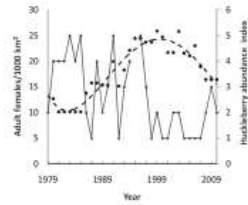


Flathead 1978-Current



Slides 11 & 12

Flathead 1978-Current

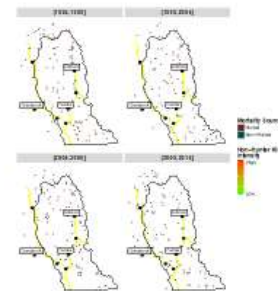


South Rockies 2006-Current



Slides 13 & 14

South Rockies 2006-Current



Slides 15 & 16



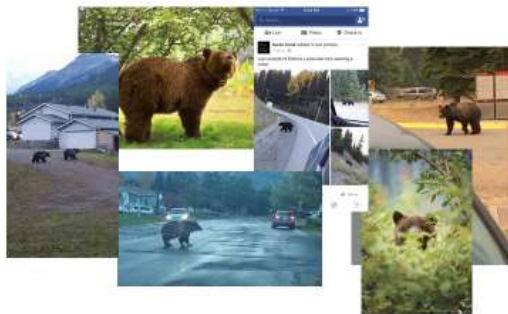
Slides 17 & 18



Slides 19 & 20



Slides 21 & 22



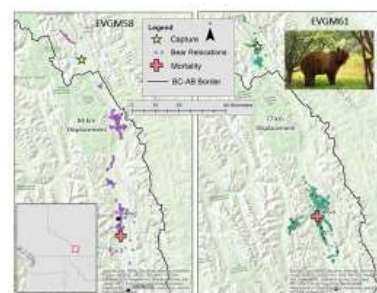
Slides 23 & 24



Slides 25 & 26



Slides 27 & 28



Slides 29 & 30

Next Steps: Action



Next Steps: Action



Slides 31 & 32

Next Steps: Action



Next Steps: Action



Slides 33 & 34

Next Steps: Action



Next Steps: Action

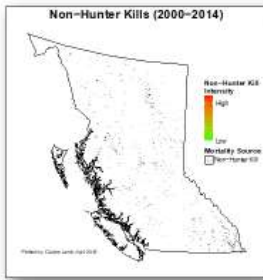


Slides 35 & 36

Studies across North America report that humans cause the majority of grizzly bear mortalities.

% human-caused mortality is not lower for un hunted populations (80-90%) than for those that are hunted (84%)

Sherrill Hamner 2002, Garshol et al. 2009, Schweitzer et al. 2008, Moore et al. 2012, McLellan 2009



“Grizzly bear persistence is determined by 3 general factors: habitat quality, the number of humans within that habitat, and the behavior of those humans (Mattson et al. 1996, McLellan 1998)”