

Minutes of Meeting		
Location: Sparwood Senior Citizens Drop-in Centre	Date: December 6, 2016	Time: 9:00 a.m. – 12:30 p.m.
Purpose: Second 2016 Biannual Meeting	Version: Final	
Attendees: See attached	Issue date: Jan 10, 2017	

Meeting commenced at 9:10 a.m.

Introductory Remarks

The Steering Committee Chair was unable to attend the meeting so Vice-Chair, Anita Palmer, welcomed everyone. She pointed out where the restrooms were located as well the exits in case of emergency.

Shelley Wedderburn provided a safety share covering home safety tips for the holidays (see attached).

Anita introduced the Steering Committee and Executive and later gave an opportunity for guests to introduce themselves.

Teck in Review (see attached presentation) – Nic Milligan

During his presentation, Lee-Anne asked Nic what the current spot price of coal was. His response was about \$250 US/metric tonne.

Lee-Anne asked what zinc is used for. Nic responded that it is used for galvanizing such things as car bodies and parts.

When asked by Lee-Anne how many metric tonnes a coal car holds and how many cars on a train, Nic answered about 100 tonnes per car and around 172 cars per train, including engines.

Lois commented that it was nice to see things getting better for Teck.

Ryland thought it would be interesting to see a graph of coal prices over the past 20 years.

Teck Coal Mountain Closure (see attached presentation) – Norm Fraser

Norm explained to the attendees that as Coal Mountain Operations will cease mining in December 2017, a closure plan has recently been completed. The mine will be put into a Care and Maintenance phase for 5 to 10 years followed by active closure. He noted that a number of social goals are captured within the closure plan, one of which is to inform future closure planning processes in the Elk Valley and throughout Teck's operations. Working through the initial community engagements and plan development has led Teck to the point of ongoing engagement and the consideration of a Closure Task Group.

Norm discussed the proposed Closure Task Group and gave examples of a mandate, term, composition, governance and potential for recommendations. He suggested that it may be a good fit for the Task Group to operate under the umbrella of the Communities of Interest Advisory Initiative the way the Elk Valley Child Care Advisory Initiative operates and reports back. There would be certain groups such as recreational users who would be targeted for representation on the Task Force but he suggested anyone

interested in being a part of the group should contact Sharon. Sharon said the Steering Committee will be meeting in late January to review its strategic direction and felt that would be a good opportunity to discuss the fit of the Closure Task Group. It was agreed that discussing it at the meeting would be an appropriate next step.

Lee-Anne asked if there was a contingency fund to manage long-term implications of closure in the future. Norm responded that contributions are made to a bond held by the government for potential reclamation needs if a company defaults on its obligations. Ryland noted that an Auditor General's report indicated there is less than 50% of the funds required to cover a closure scenario. Norm noted that costs are unknown at this point. Nic confirmed that Teck has met its obligations regarding security deposits.

Auditor's General Report link: <https://www.bcauditor.com/pubs/2016/audit-compliance-and-enforcement-mining-sector>

Feedback Mechanism – Sharon Strom

Sharon explained that there were two Level 3 Grievances received since the last Partners meeting in July. Level 3 Grievances are relatively minor but an ongoing and/or a significant issue or concern that is normally not a breach of the law or company policy. Both concerns were from Grave Lake cabin owners regarding dust suspected from Line Creek operations. The concerns were discussed at the Annual Grave Lake Cabin Owners meeting hosted by Teck on October 27. The Teck subject matter experts assured attendees at that meeting that every effort was being taken to understand and mitigate fugitive dust and the recent formation of the Teck Regional Air Monitoring Program will help to inform mine-specific dust management plans.

Interior Health Update on Surgeon Recruitment – Christina Bilski

Christina read a summary statement regarding surgeon recruitment on behalf of Interior Health:

Recruitment for a general surgeon or GP with enhanced surgical skills continues in the Elk Valley. This recruitment campaign is led by the local physician group and supported by the IHA physician recruiter in our area. There has been limited interest in the position at this time. There is a surgeon who is very interested and he is working with Health match BC, the Royal College of Physician and Surgeons and the BC College of Physicians. If he is successful in becoming licensed in BC he will then commence the immigration process. This is an issue between the applicant and the College. It is not possible for health authorities, politicians or others to intervene in this established process.

Nic asked if it is known if the interested surgeon is coming from a region where licensing easily transfers over to British Columbia or if it will be an onerous process. He also wondered if there was a projected timeline for the process to be completed. Christina said she didn't know the answers but would find out. (Note: Christina followed up and determined Interior Health had no additional information regarding the surgeon as it is an immigration issue and a College of Physician process)

Alexander Creek Streambank Restoration Project (see attached presentation) – Lee-Anne Walker

During her presentation, Lee-Anne explained that many people, including some consultants who have worked for Teck, were trained at the College of the Rockies to better understand bioengineering. The goal was to build capacity and see what suite of options was available regarding bioengineering for the stabilization of the Alexander Creek Streambank. The project involved a section of the creek near the

gun range. Teck and Sparwood & District Fish and Wildlife Association provided feedback and support throughout the project. Teck provided the boulders for the work being done. Lotec Environmental provided the prescription for the project and supervised along the way. Guy Ganci, the backhoe operator, did an excellent job working the streambank.

Lee-Anne noted that the West Fernie Wetlands project, designed to keep cyclists and walkers off of Hwy#3, is ongoing. There are plans to build a viewing platform. Some wrapping of trees for beaver control has taken place at the seasonal wetland area.

The Sparwood Beaver Wetland project has had a bit of a setback and now isn't expected to be finished until April 2017. Lee-Anne was pleased to share that Frank J Mitchell Elementary School in Sparwood is becoming a certified 'wild' school. The wetlands have been used as an outdoor classroom. Planning is taking place for a Wild School winter event.

South Rockies Grizzly Bear Project (see attached presentation) – Corinne Hoetmer

Corinne explained that she is a volunteer recruiter and coordinator for the South Rockies Grizzly Bear Project. One of the project objectives is to measure grizzly bear population change in the region backwards and forwards in time.

An important paper, Forbidden Fruit, came out from Clayton Lamb recently highlighting that an ecological trap exists for grizzlies along Hwy #3 in the Elk Valley. Most of the non-hunting mortality of grizzlies in that area occurs along the highway where human settlement and other developments are in close proximity to very good bear habitat. Corinne noted that this not a new problem and, in fact, dates back to the 1970s.

Corinne went on to describe the process of some of the research on grizzlies in the area. She explained about the setting up of bait sites and taking advantage of rub trees and using the Citizen Science approach for sample collection. The results of sampling efforts and grizzly population trends were shared before discussion on the presentation took place.

Corinne confirmed Ryland's statement that hunting isn't really the problem for grizzly bears.

Lee-Anne said the study speaks clearly to the fact that we, as a community, need to learn to live with bears. We have to figure out how we can work collectively to eliminate attractants, promote bear-proof garbage containers and perform apple captures.

Nic wondered if there was collaboration among those doing various studies around grizzly bears. Corinne answered that scientists want to share their data so there is collaboration.

Elk Valley Trans Canada Trail Update (see attached presentation) - Duane Lawrence

Duane explained that the Elk Valley Trail is a joint partnership between the District of Elkford, the District of Sparwood and the Fernie Trails Alliance and it will be designated as part of the Trans Canada Trail (TCT) network. Funding has come from Columbia Basin Trust's Elk Valley Community Directed Funds and the Trans Canada Trail Foundation. Teck donated \$1 million to the Kootenay portion of the Trail to help link the community of Trail through to Elkford. Teck has also allowed for a portion of the trail in the Elk Valley to be on their land. The Elk Valley project is about 146 km from Elko to Round Prairie. Kiosks are being established along the route.

Duane outlined the work that has been done for the project to date as well as what is planned for the spring of 2017.

Christina asked if future maintenance will require funding or if it will depend upon volunteers. Duane explained that Sparwood would be undertaking the maintenance of the trail although are looking into the possibility of a community based volunteer group that may be interested in taking on the responsibility of maintaining the trail. The recently formed volunteer-led Sparwood Trails Alliance has shown interest in taking on this responsibility. The TransCanada Trail Foundation may also provide future funding for continued development of the TCT from Round Prairie north to the BC-Alberta border.

Steering Committee Update - Sharon Strom

In Simon's absence, Sharon provided an update on some of what the Steering Committee has done over the past while:

Childcare

- EVCCAI continues to meet – next meeting Monday the 12th
- Facebook pages being well used
- In home licensed childcare facility in Elkford now
- Expansion of an existing childcare operation in Sparwood is a possibility in the near future. It will include additional part-time care which was a specific need for Sparwood
- Application made to BC Rural Dividend Funds to hire someone to compile central resources including a simplified outline of how to hire a nanny

Youth and Local Employment

- Determined at last Steering Committee that it would be helpful to have some bullet points around what recruiters may look for when hiring at Teck and make them accessible to the general public.

Post-Secondary Education

- Nothing to report in Simon's absence

Additional

- Reconnected with the area high schools for representation at Partners meetings
- Web host for www.evcnpvoice.com up for renewal in a couple of months, continue to populate it with agendas, minutes, blogs and hope to house childcare resource info there.

Closing Remarks

Anita asked everyone, as is tradition at these meetings, to share a comment regarding the meeting and its presentations or on any other topic of interest to them:

- Norm – accomplished his objective of proposing the Closure Task Force Group. It was good to participate in a well-functioning initiative.
- Scott B. – said it was good to come and see the great presentations which show communities working together.
- Terry M. – found the grizzly bear presentation to be very interesting. Another similarly interesting one was the Westslope Cutthroat Trout Study presented a while ago.
- Duane – thanked the committee for having him. He found the presentations to be very informative and learned from the grizzly study and the Teck update.

- Lois – said she enjoyed the energy, enthusiasm and knowledge that were shared.
- Andrew – found the grizzly bear study to be of interest and he pondered how the information from the study can be applied and action taken to lower the number of grizzly fatalities.
- Denise – really enjoyed the meeting.
- Ryland – took the opportunity to say that he was hoping to form an Elk Valley Land Trust to protect land access for trails, hunting and fishing, for example. If anyone is interested in participating, they can email him at: ryland@wildsight.ca
- Amy – said we sometimes forget why we live here – for the lifestyle. There is great work being done around sustainability.
- Malia – learned a lot and will be proud to take the information back to the school.
- Scott R. –
- Christina – noted that this was the first time she attended a Partner’s meeting. She enjoyed seeing how the communities are working together to get things done.
- Shelley – was amazed at how much she didn’t know about the topics shared at this meeting.
- Sally – found it interesting to see how different communities working together function. She would like to take these examples to the high school students and encourage them to push beyond what is comfortable for them.
- Nelson – thanked the speakers.
- Gordon – thanked everyone for attending and speaking. He noted that he will be attending a Teck meeting the following day to review access to Teck property which will include Coal Mountain Operations.
- Murray – said he enjoyed the presentations and thanked everyone.
- Terry A. – recognized that people sometimes forget the many people who do things with very little recognition and he thanked those present for all that they do.
- Nic – said it was good to see different perspectives at these meetings and they are not just about Teck pushing out information. There is information and idea sharing and opportunities for collaboration. Nic later added that he recently reached out to the Ktunaxa Nation Council (KNC) to regain their representation on the Steering Committee and at the Partners meetings. He explained that while Teck was in negotiations with them over the Impact Management Benefit Agreement, now signed, the KNC felt is best to step back from the Initiative.
- Lee-Anne - felt that the fact that the Advisory Initiative has been functioning for almost 5 years means that participants and Teck are committed to being interested and engaged with the communities and showing that we can live with each other. It is great that Teck is looking at the short and medium term but also the long term so far down the line as mine closures.
- Corinne – was sorry she missed some of the first presentation but enjoyed the Elk River Alliance and Elk Valley Trans Canada Trails presentations and she hopes to get involved in some of the projects. She noted that she was invited by a teacher at Rocky Mountain Elementary School to speak about grizzly bear conservation. She feels that getting youth involved in conservation is the future for conservation.
- Anita – thanked all of the presenters and noted that the passion they had about their subjects could be felt. She thinks that it is amazing what people can do and accomplish when they work together. Anita added that the College of the Rockies in Fernie has received funding for an

initiative targeted at older workers. The next session will start in February and is aimed at unemployed people aged 55-64. They will be taught soft skills that should help them return to work. Students will receive monetary support while taking the program. Anita asked that the attendees pass the information along to anyone they feel could benefit from the program.

- Sharon – thanked the presenters and everyone for attending and added that she enjoyed the presentations and the dialogues that took place.

Meeting ended at 11:55 a.m. and was followed by lunch and networking

Next Meeting of the Partners will June 2017

Next Steering Committee meeting will be March 2017

December 6, 2016 Advisory Partners Meeting Attendance

Name	Representing	Email
Anonson, Terry	Aboriginals/Metis/Elkford	terryanonson@elkvalley.net
Beeching, Scott	District of Elkford	sbeeching@elkford.ca
Bertrand, Denise	District of Elkford	dbertrand@elkford.ca
Bevand, Sally	The Fernie Academy Staff	sbevand@thefernieacademy.ca
Bilski, Christina	Interior Health	christina.bilski@interiorhealth.ca
Craig, Andrew	Youth/Fernie	tfaandrewc@gmail.com
Fraser, Norm	Teck Communities	norman.fraser@teck.com
Galloway, Gordon	Motorized Recreation	gmoose@telus.net
Haight, Murray	Elkford ATV Club	elkman2@shaw.ca
Halko, Lois	Municipal Government	lhalko@sparwood.ca
Hoetmer, Corinne	South Rockies Griz Bear Proj	corinne.hoetmer@gmail.com
Lawrence, Duane	DOS Recreation	dlawrence@sparwood.ca
Mac Con, Amy	Teck Human Resources	amy.maccon@teck.ca
Melcer, Terry	District of Sparwood	tmelcer@sparwood.ca
Milligan, Nic	Teck Community Affairs	nic.milligan@teck.com
Nelson, Ryland	Wildsight	ryland@wildsight.ca
Palmer, Anita	Education	apalmer@cotr.bc.ca
Robinson, Scott	RDEK EVSC/Fernie	skrpc@shaw.ca
Samyia, Malia	Youth	tfamalia1@gmail.com
Strom, Sharon	Teck Community Affairs	sharon.strom@teck.com
Walker, Lee-Anne	ENGO/Elk River Alliance	lee-anne@elkriveralliance.ca
Wedderburn, Shelley	Michel Creek Rd Residents	shelley1226001@msn.com
Wight, Nelson	District of Sparwood	nwight@sparwood.ca

Unable to attend:

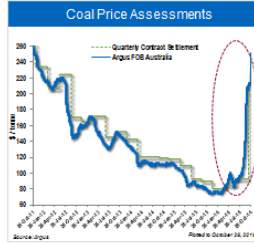
Name	Representing	Email
Bauer, Kim	Social Programs	ewtf@telus.net

Drain, Joanne	Seniors	jvdrain@shaw.ca
Howse, Simon	Business/Housing	showse@parastone.ca
Talarico, Janice	Interior Health	janice.talarico@interiorhealth.ca
Wall, Kerri	Interior Health	kerri.wall@interiorhealth.ca

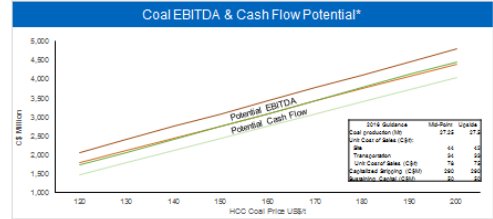
Slides 7 & 8

Strong Recovery in Steelmaking Coal **Teck**

- Market tightness due to:
 - Global curtailments
 - Operating day restrictions in China
 - Weather & transportation issues
 - Production interruptions
 - Increased global demand
- Industry response is constrained



Expanding Coal Earnings Potential **Teck**



Cost reductions and price increases contribute to expanding earnings potential

*H2O2 price is assumed to be US\$100/tonne. The midpoint update assumes the midpoint of H2O2 production and transportation cost at the current 2016 guidance. The update also assumes a 10% increase in H2O2 production and a 10% increase in H2O2 transportation cost. The update also assumes a 10% increase in H2O2 production and a 10% increase in H2O2 transportation cost. The update also assumes a 10% increase in H2O2 production and a 10% increase in H2O2 transportation cost.

Slides 9 & 10

Copper Quarterly Results **Teck**



Expect top end of production guidance range (310 kt-320 kt) and bottom end of cost guidance range (US\$1.40-US\$1.50/lb) for 2016

1. CT unit costs are net of by-product credits. Their unit costs are CT unit costs plus by-product credits. Cost guidance range is for CT unit costs.
 2. Sales, production and production - non-GAAP financial measure. See "Non-GAAP Financial Measures" section of the quarterly news release for further information.

Zinc Quarterly Results **Teck**

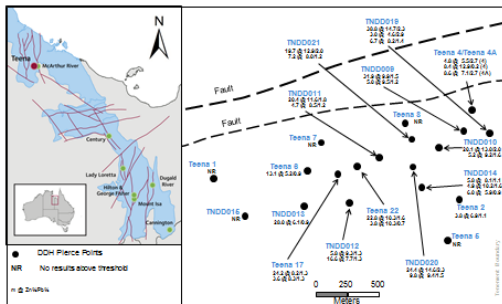


Expect 180 kt of zinc sales at Red Dog in Q4

1. Represents production and sales from Red Dog and Red Dog, and excludes co-producing production from our copper business unit.
 2. Sales, production and production - non-GAAP financial measure. See "Non-GAAP Financial Measures" section of the quarterly news release for further information.

Slides 11 & 12

Teena/Reward Zinc Project **Teck**



11. All content herein is confidential and for internal use only. It is not to be distributed outside the organization. The information herein is provided for informational purposes only and does not constitute an offer or recommendation. Teck is not responsible for any loss or damage resulting from the use of this information.

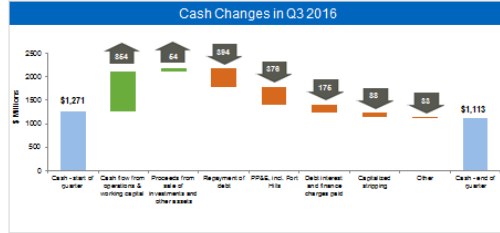
Fort Hills Project Status & Progress **Teck**



12. Source: Advisor, Primary extraction, September 2016.

Slides 13 & 14

Cash Flow **Teck**



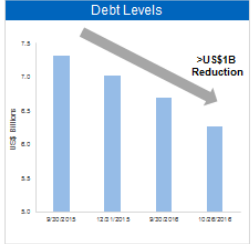
Expect year-end cash balance of ~C\$1B

13 Non-GAAP measure. See 'Use of Non-GAAP Financial Measures' section of the quarterly news release for further information.

Acting on Debt Reduction **Teck**

- Repurchased public notes in September and October
 - Face value: US\$759M
 - Total cost: US\$693M
 - Total pre-tax gain: C\$76M
 - Tranches: 2023, 2035, 2040, 2041, 2042, 2043
- Annual interest savings: US\$43M

Current Debt Profile	
Public notes outstanding	US\$6.1B
Average coupon	5.7%
Weighted average term to maturity	~13 years
Debt to debt-plus-equity ratio	33%

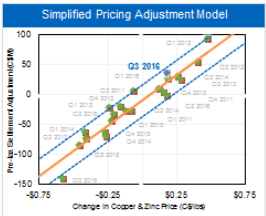


Reduced debt by ~C\$1.4B in the past 12 months

14

Slides 15 & 16

Quarterly Pricing Adjustments **Teck**



	Outstanding at Jun. 30, 2016		Outstanding at Sep. 30, 2016		Quarterly Price Change	Pricing Adjustments
	Mt/a	US\$/lb	Mt/a	US\$/lb		
Copper	193	2.19	156	2.20	0.01	\$5
Zinc	91	0.95	246	1.08	0.13	\$20
Other						\$12
TOTAL						\$37

Driven by quarterly change in key commodity prices

15

Emerging Stronger from this Cycle **Teck**



- Production growth from Fort Hills
- No operating assets sold
- No equity dilution
- Maintaining strong liquidity
- Reducing debt, managing maturities

Result is higher production per share

Slide 17

Thank you! **Teck**

Questions?

Nic Milligan
 Manager, Community & Aboriginal Affairs
Nic.milligan@teck.com
 250.425.3335

17

Slides 1 & 2

Teck | Closure Task Group Proposal
Norm Fraser, Leader, Aboriginal Initiatives
December 6, 2016

Coal Mountain Operations **Teck**

- Completion of Closure Plan December 2016
- Conclusion of mining December 2017
- Care and Maintenance Phase 5 – 10 years
- Active Closure

Slides 3 & 4

Social Goals **Teck**

- Meet external, internal and regulatory requirements
- Support the long-term cultural, conservation, recreational and economic needs of the region
- Strengthen reputation and relationships
- Inform future closure planning processes in the Elk Valley and throughout Teck's operations
- Strengthen support for Teck's activities in the Elk Valley

Engagement Timeline **Teck**

```

graph LR
    A[Initial Engagement] --> B[Plan Development]
    B --> C[Ongoing Engagement]
  
```

- Initial Engagement**
 - Direct engagement
 - Open Houses
 - Feedback Survey
- Plan Development**
 - Closure Plan
 - Care and Maintenance Plan
 - Care and Maintenance Manual
- Ongoing Engagement**
 - Direct Engagement
 - Closure Task Group

Slides 5 & 6

Proposal – Closure Task Group **Teck**


Mandate	<ul style="list-style-type: none"> • Provide focused feedback and input into Teck's closure planning • Initial scope of current CMO closure planning
Term	<ul style="list-style-type: none"> • Initial terms of 2 years • Could be extended to 5-10 year Care and Maintenance phase or beyond
Composition	<ul style="list-style-type: none"> • Volunteers from the COIAI but also the broader community • Ensure representation from specific groups to a maximum of 10 members
Governance	<ul style="list-style-type: none"> • function as a subgroup of the COIAI • develop its own terms of reference for approval by COIAI and Teck CMO closure team
Recommendations	<ul style="list-style-type: none"> • Recommendations to the CMO closure team • Report on their activities to the COIAI

Discussion **Teck**

Slides 1 & 2


Bioengineering for Streambank Stabilization – A Community/Industry Partnership

Presentation for Teck Community of Interest – Fall Partners Meeting
Sparwood Seniors Centre
December 6, 2016



Lee-Anne Walker, Executive Director
Elk River Alliance
www.elkriveralliance.ca


Elk River FLOOD STRATEGY



WHY do we need an Elk River Flood Strategy?

Slides 3 & 4

Bioengineering Course May 5 & 6, 2016



Bioengineering for streambank stabilization

- ▶ Live vegetation for soil erosion control
 - Habitat enhancement
- ▶ Often combined with conventional engineering structures
- ▶ Native shrub and tree species
 - Grow roots and shoots from live cuttings
 - Dormancy period

Slides 5 & 6

Benefits

- ▶ Esthetics and habitat value
- ▶ Roots remove excess soil moisture
- ▶ Stronger with time
- ▶ Species adapted to environment
- ▶ Less heavy equipment
- ▶ Cost effective
- ▶ Once established, little maintenance

Limitations

- ▶ Surface slope stabilization
- ▶ Periodic monitoring
- ▶ Maintenance pre-establishment
- ▶ Seasonal installation
- ▶ Vegetation vulnerabilities
 - Drought
 - Soil deficiencies
 - Sunlight
 - Grazing, trampling

Slides 7 & 8

Lizard Creek



Slides 9 & 10



Alexander Creek



Slides 11 & 12



Slides 13 & 14



Slides 15 & 16

Thank you to our partners:

INDUSTRY

- Teck
- Canfor
- Lotic Environmental Ltd.
- Terra Erosion Control Ltd.

GOVERNMENT

- BC Hydro (Fish and Wildlife Compensation Program)
- Fisheries and Oceans Canada (DFO)

COMMUNITY

- Sparwood Fish and Wildlife Association

Thank you for
 your interest!



You can reach the Elk River Alliance at...

Email: lee-anne@elkriveralliance.ca
Phone: 250-423-3322
Address:
 891 2nd Ave,
 PO Box 537
 Fernie BC V0B 1M0

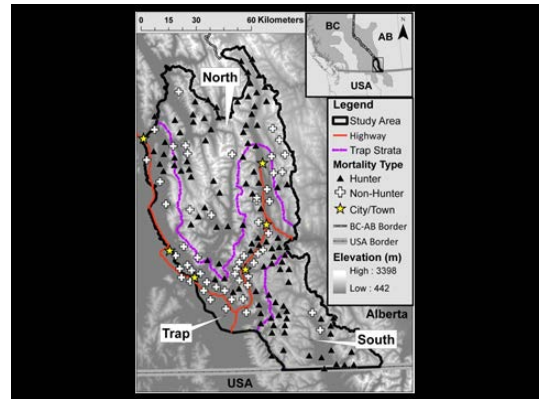
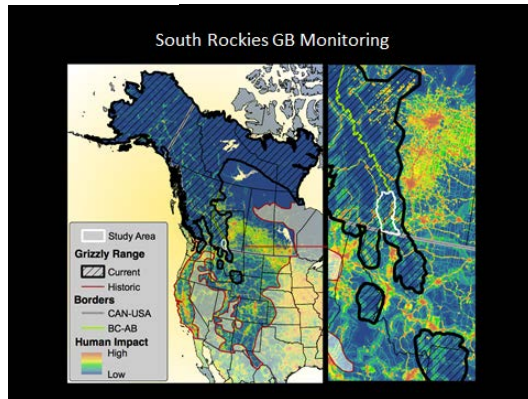
Slides 1 & 2



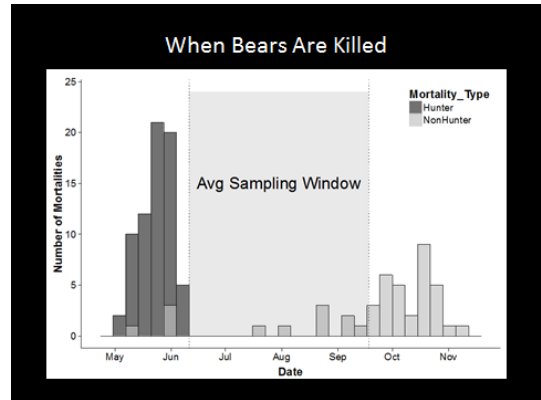
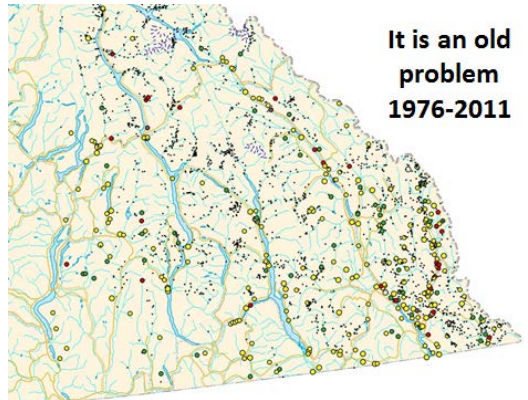
Project Objectives

- Measure grizzly population change backwards and forwards in time.
- Relate population change to hunter kill to ensure sustainability.
- Relate population change to non-hunter kill to measure the impact on population health.
- Relate population growth to food resources such as berries, ungulates or other vegetation resources.

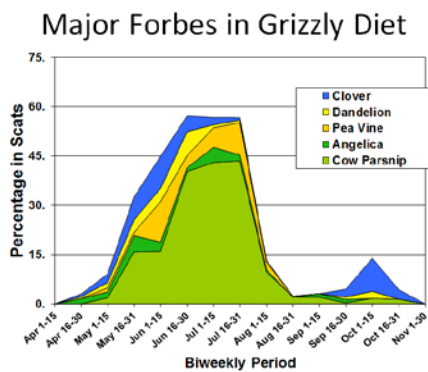
Slides 3 & 4



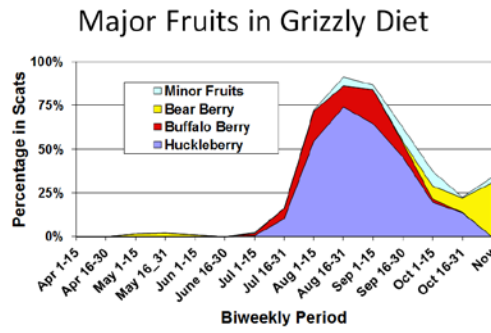
Slides 5 & 6



Slides 7 & 8



Slides 9 & 10



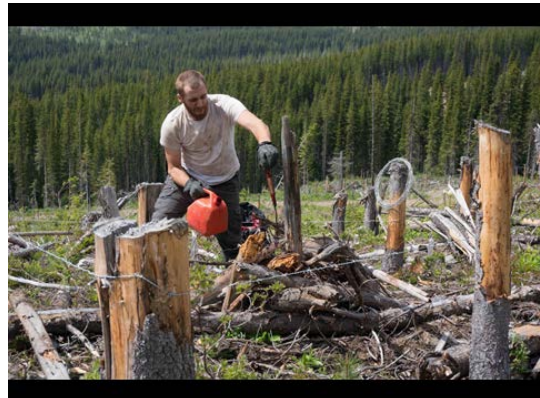
Slides 11 & 12



Slides 13 & 14



Bait Sites
 10 mile slides,
 upper Flathead
 drainage



Slides 15 & 16



Slides 17 & 18



Slides 19 & 20



Slides 21 & 22

Rub Trees

- Believed to be used for scent identification between individuals and territory marking
- Both males and females rub, including cubs
- Bears will rub trees, posts, power poles, cabins, etc.

What is a Rub Tree?

Identification Tricks:

- Ground surrounding the base of the tree is often disturbed/bare
- Bark may look discoloured/smooth
- Tree will always be on "friendly" terrain

Slides 23 & 24

Where Do You Find Rub Trees?

Often along backroads and well used trails

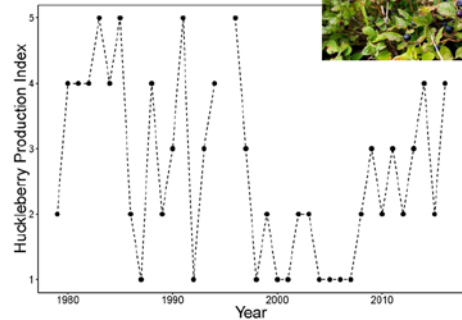
Citizen Science Approach Rub Tree Sample Collection

- easy to see
- training helps
- safe to monitor
- inclusive – all parties can learn
- link to cloud technology – iPads

Slides 25 & 26

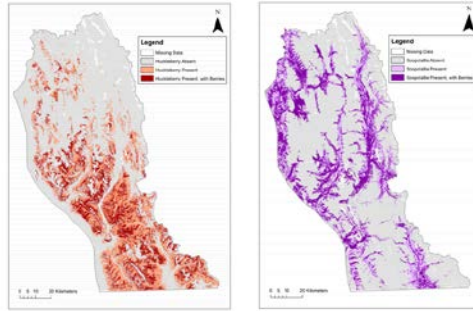
Laboratory Methods

Monitoring Bear Foods



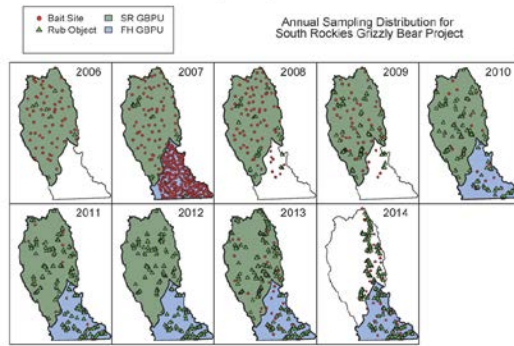
Slides 27 & 28

Monitoring Bear Foods

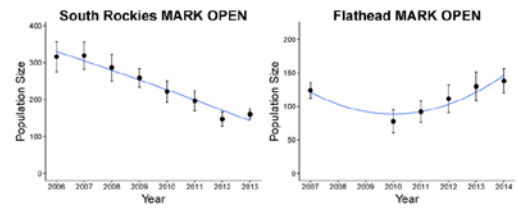


Slides 29 & 30

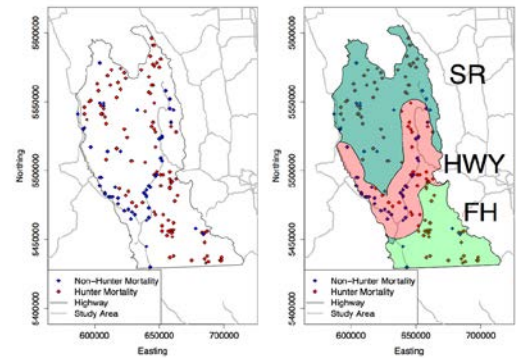
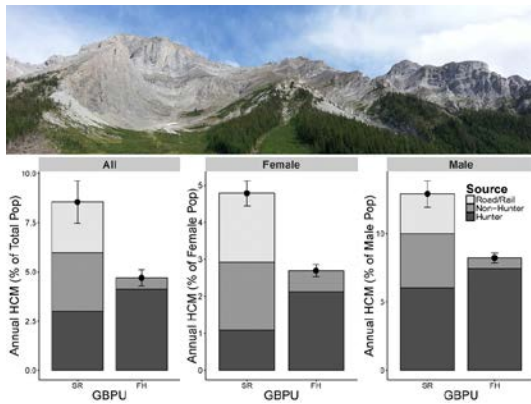
Sampling Effort



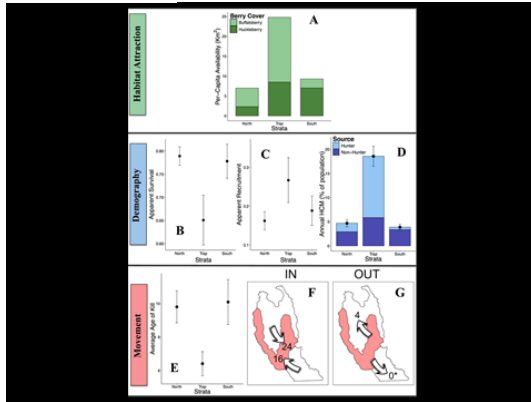
Population Trend



Slides 31 & 32



Slides 33 & 34

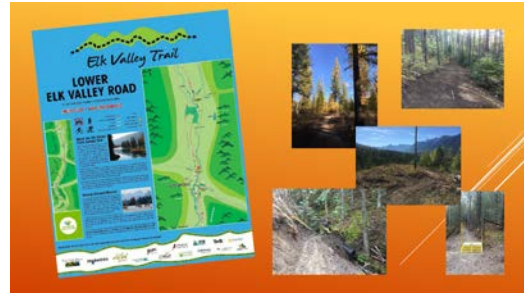
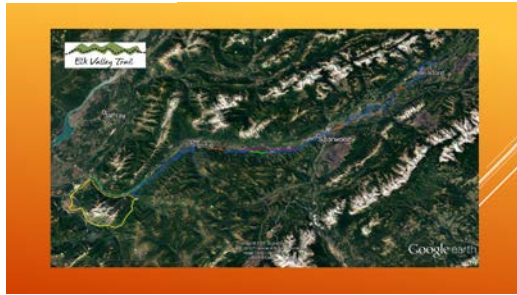


Slides 1 & 2

Slides 3 & 4

Slides 5 & 6

Slides 7 & 8



Safety Message

Home Safety Tips for the Holidays (Canadian Safety Council)

1. Smoke/carbon monoxide detectors.
Make sure you have them and they are working.
2. Light Safety: Purchase extension cords for the specific job. Do not use an indoor cord outdoors as they are not rated for the outdoor elements. However it is safe to use outdoor lights and cords indoors. Do not connect different light strings together. Never plug and LED string into an incandescent string. Always inspect your lights and cords for defects.
3. Staying warm: Space Heaters – Always plug directly into the outlet. Never plug into a power bar or another extension cord. Give the heaters lots of room – at least three feet of room on all sides. Consider replacing your older space heater with new models that will automatically shut off if tipped over or overheats.
4. Cooking Safe: Never leave grilling, frying or broiling unattended. Keep cooking surfaces and counters clutter free. Order in if intoxicated.

Please have a Happy Safe Holiday Season

Shelley